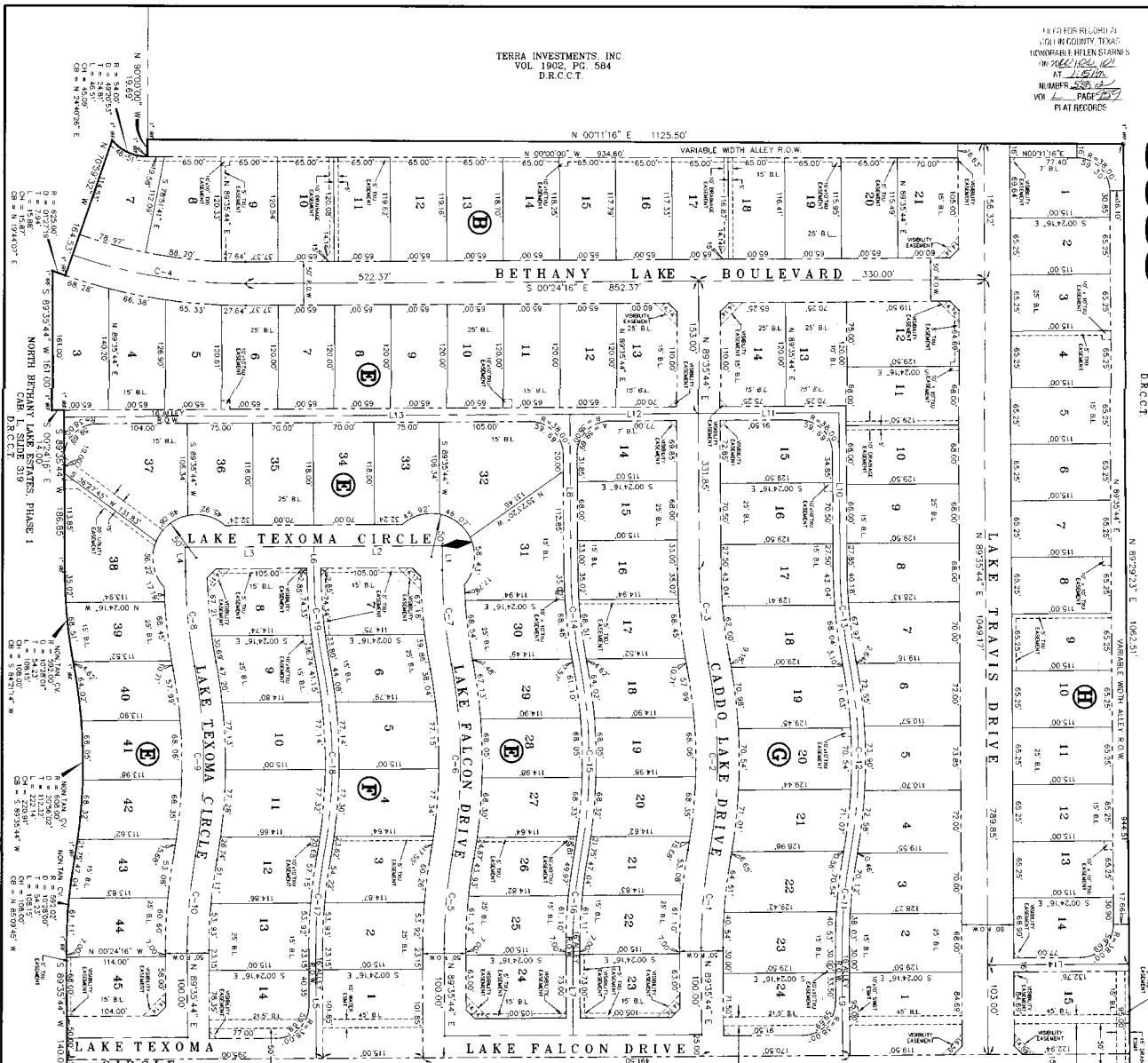


TERRA INVESTMENTS, INC.  
VOL. 286, PAGE 564  
D.R.C.C.T.

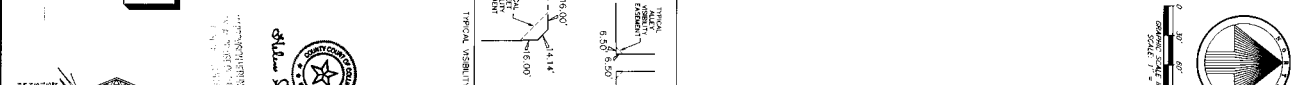
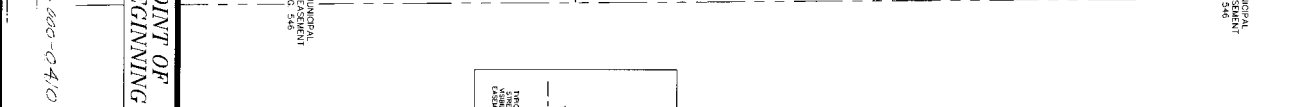
18 FOR RECORD IN  
COUNTY TEXAS  
RECORDED WITH STRINGS  
AT 11/23/09  
NUMBER 286-564  
VOLUME PAGE 564  
PLAT RECORDS

**5953**

ALLEN HANNINGTON  
VOL. D.R.C.C.T.



POINT OF BEGINNING  
6871-000-0410  
NORTH TEXAS MUNICIPAL WATER DISTRICT EXHIBIT VOL. 286, PG. 564



CHORD TABLE

| CHORD | BEARING       | DELTA  | LENGTH | CHORD BEARING |
|-------|---------------|--------|--------|---------------|
| C-1   | N 89°35'44" E | 109.61 | 109.61 | N 89°35'44" W |
| C-2   | N 89°35'44" E | 109.61 | 109.61 | N 89°35'44" W |
| C-3   | N 89°35'44" E | 109.61 | 109.61 | N 89°35'44" W |
| C-4   | N 89°35'44" E | 109.61 | 109.61 | N 89°35'44" W |
| C-5   | N 89°35'44" E | 109.61 | 109.61 | N 89°35'44" W |
| C-6   | N 89°35'44" E | 109.61 | 109.61 | N 89°35'44" W |
| C-7   | N 89°35'44" E | 109.61 | 109.61 | N 89°35'44" W |
| C-8   | N 89°35'44" E | 109.61 | 109.61 | N 89°35'44" W |
| C-9   | N 89°35'44" E | 109.61 | 109.61 | N 89°35'44" W |
| C-10  | N 89°35'44" E | 109.61 | 109.61 | N 89°35'44" W |
| C-11  | N 89°35'44" E | 109.61 | 109.61 | N 89°35'44" W |
| C-12  | N 89°35'44" E | 109.61 | 109.61 | N 89°35'44" W |
| C-13  | N 89°35'44" E | 109.61 | 109.61 | N 89°35'44" W |
| C-14  | N 89°35'44" E | 109.61 | 109.61 | N 89°35'44" W |
| C-15  | N 89°35'44" E | 109.61 | 109.61 | N 89°35'44" W |
| C-16  | N 89°35'44" E | 109.61 | 109.61 | N 89°35'44" W |
| C-17  | N 89°35'44" E | 109.61 | 109.61 | N 89°35'44" W |
| C-18  | N 89°35'44" E | 109.61 | 109.61 | N 89°35'44" W |
| C-19  | N 89°35'44" E | 109.61 | 109.61 | N 89°35'44" W |

**S4456**

**DINAWAY ASSOCIATES, INC.**  
2555 W. NORTHWEST HWY., SUITE 200  
DALLAS, TEXAS 75222  
TEL (972) 820-0242  
FAX (972) 820-0244

**OWNER:**  
ALLEN HANNINGTON, L.P.  
2555 W. NORTHWEST HWY., SUITE 200  
DALLAS, TEXAS 75222  
TEL (972) 820-0242  
FAX (972) 820-0244

**FINAL PLAN:**  
NORTH BETHANY LAKE ESTATES  
PHASE TWO

29.942 ACRES OUT OF THE BEN L. MARTIN  
C.C.F.# 99-0100932  
L.R.C.C.T. AND  
WILLIAM SANDER SURVEY ABSTRACT NO. 821  
CITY OF ALLEN, COLLIN COUNTY, TEXAS

**NOTES:**  
ALL LOT DIMENSIONS ARE TO CENTER OF CURVE UNLESS OTHERWISE NOTED.  
UNLESS OTHERWISE NOTED.

**LEGEND:**  
STREET RIGHT-OF-WAY  
TYPICAL easement DETAIL

**LINE TABLE:**

| LINE | BEARING       | LENGTH |
|------|---------------|--------|
| L-1  | N 89°35'44" E | 27.85  |
| L-2  | S 00°24'16" E | 148.00 |
| L-3  | N 89°35'44" E | 178.85 |
| L-4  | N 89°35'44" E | 27.85  |
| L-5  | S 00°24'16" E | 148.00 |
| L-6  | S 89°35'44" W | 178.85 |
| L-7  | S 89°35'44" W | 178.85 |
| L-8  | S 89°35'44" W | 178.85 |
| L-9  | S 89°35'44" W | 178.85 |
| L-10 | S 89°35'44" W | 178.85 |
| L-11 | S 00°24'16" E | 148.00 |
| L-12 | S 00°24'16" E | 148.00 |
| L-13 | S 00°24'16" E | 148.00 |
| L-14 | S 00°24'16" E | 148.00 |